

Fele 1.

Helsing til Dieter Last.

Reinlander

Nils H. Gjelsten
arr. Henry Vike

The first two staves of the musical score for Fele 1. The first staff contains the first four measures of music, with chords D, A7, D, and cm A7. The second staff contains the next four measures, with chords D, A7, D, cm, A, A7, D, and D. A first ending bracket spans the last two measures of the second staff, with a second ending bracket below it.

The Clarinet (Klar.) and Fiddle (Felle) parts for the first system. The Clarinet staff has notes and rests with chords hm, cm, A7, and D. The Fiddle staff has notes and rests.

The first staff of the second system, containing the first four measures of music with chords hm, cm, A7, D, and D. A first ending bracket spans the last two measures, with a second ending bracket below it.

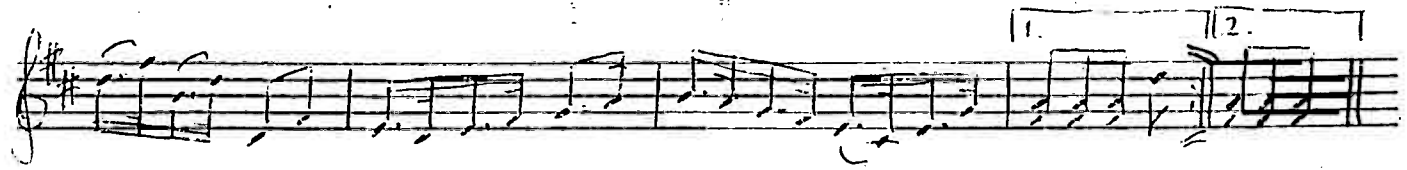
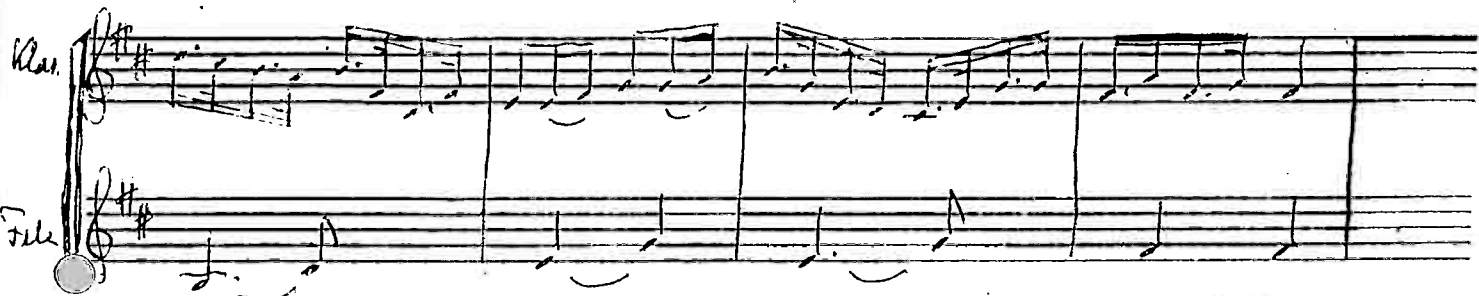
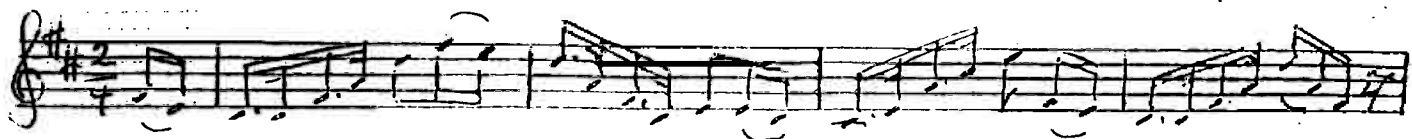
The second staff of the second system, containing the next four measures of music with chords D, cm, A7, D, and D.

The third staff of the second system, containing the final four measures of music with chords D, cm, A7, D, and D. A first ending bracket spans the last two measures, with a second ending bracket below it.

Felle 2.

Helsing til Dieter Last.
Reimlender

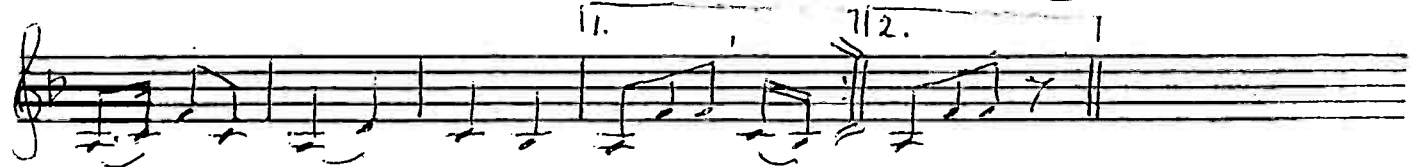
Nils H. Gjelsten
arr. Henry Vike



Helsing til Dieter Last
Reinlemler.

Nils H. Gjelstøm
arr. Henry Vike

Klar. A.



Leising til Dieter Last

Fele 1.

Reinlender.

av Nils H. Gjelsten
arr. Henry Vika

Klar. n. *hm*

Fele *hm*

Fele *hm*

Fele 2

Reinlender

Nils H. Gjelsten