

Sören-Galoppen.

1. Stemme.

Handwritten musical score for the first voice of 'Sören-Galoppen'. The score is written on four staves in treble clef with a key signature of one sharp (F#) and a 2/4 time signature. The music consists of eighth and sixteenth notes, often beamed together. Chord symbols are written below the notes: D, A7, D, D, D, G, D, A7, D. There are also some handwritten annotations like '11' and '12' above notes, and '1' and '2' above a double bar line section.

Fra Rasmus Sp. 13 nummer by artist.

2. Stemme.

Handwritten musical score for the second voice of 'Sören-Galoppen'. The score is written on five staves in treble clef with a key signature of one sharp (F#) and a 2/4 time signature. The music consists of eighth and sixteenth notes, often beamed together. Chord symbols are written below the notes: D, A7, D, D, D, D, A7, D, A7. There are also some handwritten annotations like '1' and '2' above a double bar line section, and '1' and '2' above notes.

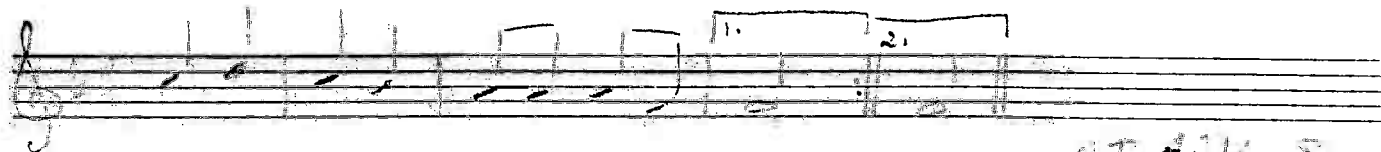
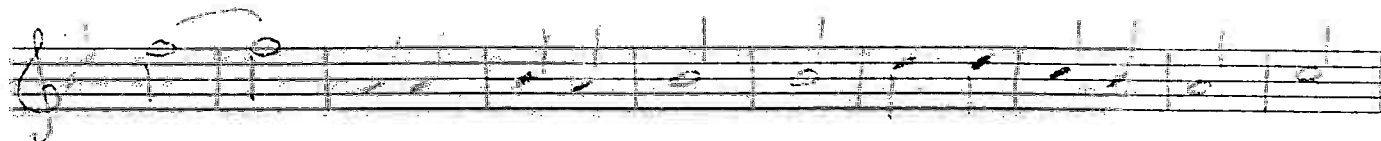
R. F. ARIL. 80

Galopp - Polka

EMD Notizbuck Nr. 7052

Sater - Galoppen Polka Sturz

Klarinet H
2. Stimme



R.T. A. 12. 5

