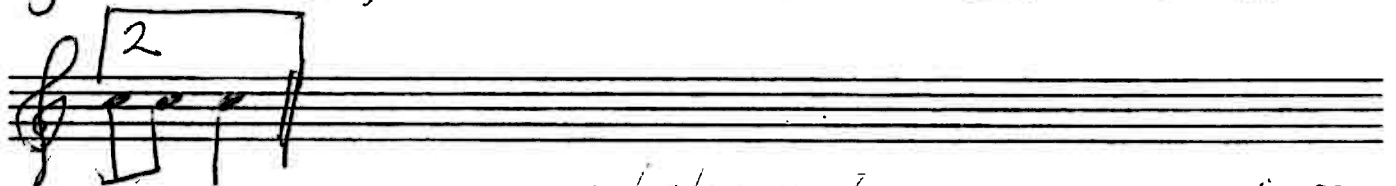


REINLENDER ETTER KLENNET - OLA

A handwritten musical score for the piece "REINLENDER ETTER KLENNET - OLA". The score is written on six staves, all in treble clef. The key signature is two sharps (F# and C#), and the time signature is 2/4. The notation includes various rhythmic values, accidentals, and performance markings. The first staff begins with a treble clef, a key signature of two sharps, and a 2/4 time signature, followed by a 'V' marking. The second staff has a 'y' marking above it. The third staff features a 'SYNG' marking above it. The fourth staff includes a '3' marking below it. The fifth staff has a 'V' marking above it. The sixth staff starts with a '2' marking above it and ends with the text 'NOT. 4/4 = 2/2'. The handwriting is in black ink on a white background.

Reinlender eller Klendrust. Ola



Emo Noteblokk nr. 7052

høsten er i f. Du Du E