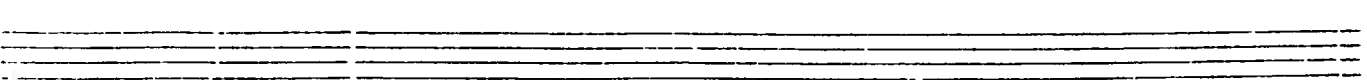
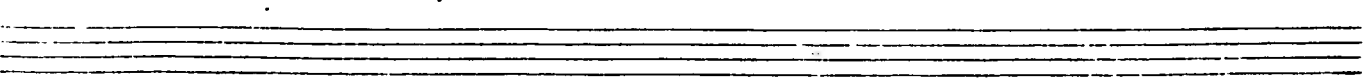
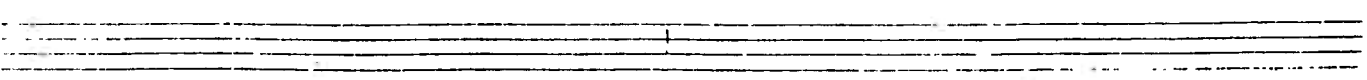
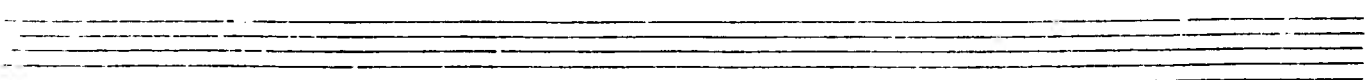
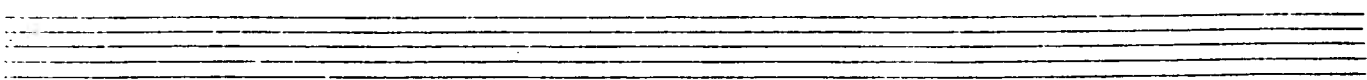
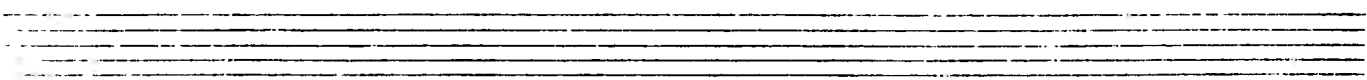
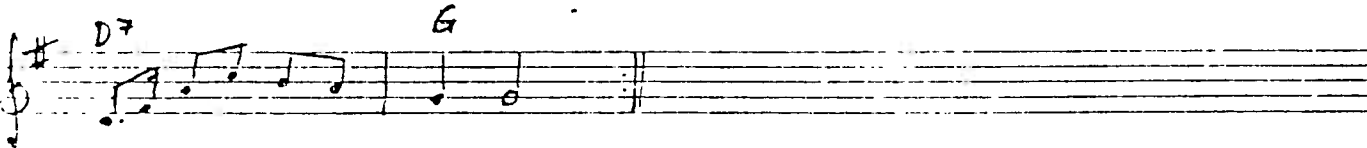
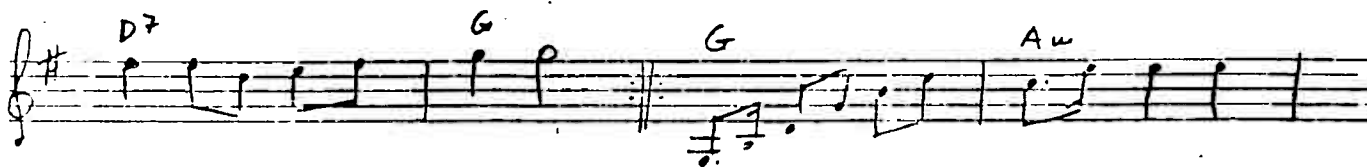
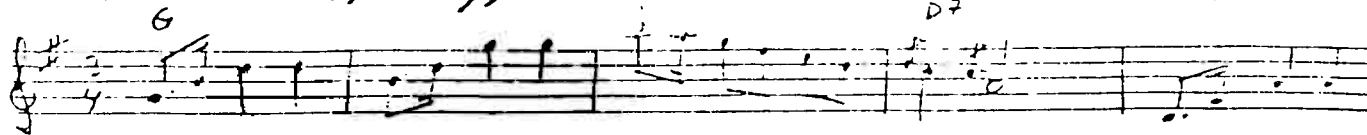


1 flöj

"STINA"  
Springvalsa.

as Ragman's



2. Stemme.

# "STINA" Spring solha av Ragnar Törnqvist

The first six staves of the handwritten musical score are written in treble clef with a key signature of one sharp (F#) and a 3/4 time signature. The notation includes various rhythmic values such as quarter notes, eighth notes, and sixteenth notes, along with rests and repeat signs. The piece concludes with a double bar line and repeat dots on the sixth staff.

Seven empty musical staves are provided below the first six staves, each consisting of five horizontal lines. These staves are currently blank, suggesting they are intended for a second part of the music or for practice.