

Felle 1.

Swanhitel's Bridemarsj.

av P. L. Ryndal ②

Handwritten musical score for Felle 1, Swanhitel's Bridemarsj. The score is written on a single staff in G major and 4/4 time. It consists of 12 measures. The first measure is marked with a 'v' and a '4' over the staff. The second measure has a repeat sign. The score includes various musical notations such as slurs, ties, and triplets. Chord symbols are written below the staff: E, D7, G, A, F, C, E7, and C. The piece concludes with a double bar line and repeat signs.

Fole 2.

Frankild's Brødemorsj.

av P. L. Ryndal. 1

Handwritten musical score for Fole 2, titled "Frankild's Brødemorsj." by P. L. Ryndal. The score is written on ten staves in treble clef with a key signature of one sharp (F#) and a 4/4 time signature. The music features various rhythmic patterns, including eighth and sixteenth notes, and rests. There are first and second endings marked with "1" and "2" respectively. The score concludes with a double bar line and repeat signs.

Three empty musical staves at the bottom of the page.

# 3. fele (bratsj) Svanhilds Brudemarsj

Peter L. Ryppdal  
arr. Henry Vike

Handwritten musical score for the first system of '3. fele (bratsj) Svanhilds Brudemarsj'. It consists of four staves. The first staff is in treble clef with a 4/4 time signature. The second staff is in bass clef. The third staff is in treble clef. The fourth staff is in bass clef. The music features various rhythmic patterns, including eighth and sixteenth notes, and rests. There are repeat signs and first/second endings indicated by brackets and numbers 1 and 2.

## Fele 2 Svanhilds Brudemarsj

Obs! F dette arr. må denne 2. felestenma brukast!

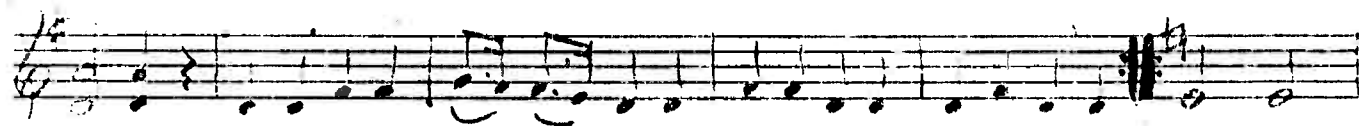
Peter L. Ryppdal  
arr. Henry Vike

Handwritten musical score for the second system of 'Fele 2 Svanhilds Brudemarsj'. It consists of ten staves. The first staff is in treble clef with a 4/4 time signature. The second staff is in bass clef. The third staff is in treble clef. The fourth staff is in bass clef. The fifth staff is in treble clef. The sixth staff is in bass clef. The seventh staff is in treble clef. The eighth staff is in bass clef. The ninth staff is in treble clef. The tenth staff is in bass clef. The music features various rhythmic patterns, including eighth and sixteenth notes, and rests. There are repeat signs and first/second endings indicated by brackets and numbers 1 and 2. The score ends with a double bar line and a sharp sign.

2. fele (left)

Svanhilds Brudmarsj

P. B. Rypstal



Klarinetten 1 und 2 B

Svanhilds Brödemarsj

P. L. Eydal

Trompet 1 og 2 B Svanhilds Brødemarsj

P. L. Rypdal

Handwritten musical notation for Trompet 1 og 2 B, first staff. The key signature is two sharps (D major), and the time signature is 4/4. The notation includes a repeat sign and various rhythmic values.

Handwritten musical notation for Trompet 1 og 2 B, second staff. It features first and second endings, indicated by '1.' and '2.' above the staff. The notation includes a repeat sign and various rhythmic values.

Handwritten musical notation for Trompet 1 og 2 B, third staff. It includes a triplet of eighth notes, indicated by a '3' above the staff. The notation includes a repeat sign and various rhythmic values.

Handwritten musical notation for Trompet 1 og 2 B, fourth staff. It features first and second endings, indicated by '1.' and '2.' above the staff. The notation includes a repeat sign and various rhythmic values.

Horn 1 og 2 F Svanhilds Brødemarsj

P. L. Rypdal

Handwritten musical notation for Horn 1 og 2 F, first staff. The key signature is two sharps (D major), and the time signature is 4/4. The notation includes a repeat sign and various rhythmic values.

Handwritten musical notation for Horn 1 og 2 F, second staff. It includes a triplet of eighth notes, indicated by a '3' above the staff. The notation includes a repeat sign and various rhythmic values.

Klarinett 1 og 2 B

Svanhilds Brødemarsj

F. L. Rypdal

The image shows a handwritten musical score for Clarinet 1 and 2 in B-flat. The title is "Svanhilds Brødemarsj" by F. L. Rypdal. The score is written on six staves. The first five staves are in G major (one sharp) and 4/4 time. The sixth staff begins with a key signature change to F major (two flats) and a time signature change to 3/8. The music features a mix of eighth and sixteenth notes, with some triplet markings and dynamic markings like *mf* and *f*. There are also some handwritten annotations and corrections throughout the score.

Trombone 1 og 2 Euanhilds Brudemarj

P.L. Rypdal