

Ganglåt etter Blånn-Dilla

Handwritten musical notation on a single staff. The key signature has two sharps (F# and C#). The melody begins with a quarter rest, followed by a quarter note G4, an eighth note A4, and a quarter note B4. A double bar line with repeat dots follows. The melody continues with a quarter note G4, an eighth note A4, a quarter note B4, and a quarter note C5. A handwritten '8' is above the first measure. Chords 'D', 'G', and 'D' are written below the staff.

Handwritten musical notation on a single staff. The melody continues with a quarter note D5, an eighth note C5, a quarter note B4, and a quarter note A4. A handwritten 'A7' is below the first measure. The melody continues with a quarter note G4, an eighth note A4, a quarter note B4, and a quarter note C5. A handwritten '3' is below the last measure.

Handwritten musical notation on a single staff. The melody continues with a quarter note B4, an eighth note A4, a quarter note G4, and a quarter note F#4. A handwritten 'D' is below the first measure. The melody continues with a quarter note E4, an eighth note D4, a quarter note C4, and a quarter note B3. A handwritten 'G D' is below the second measure. The melody continues with a quarter note A3, an eighth note G3, a quarter note F#3, and a quarter note E3. A handwritten 'A7' is below the last measure.

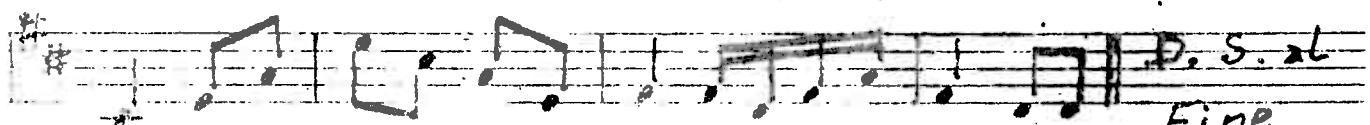
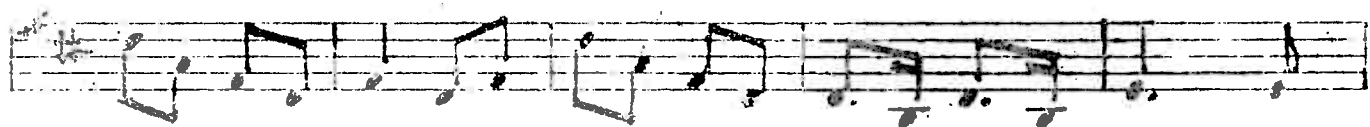
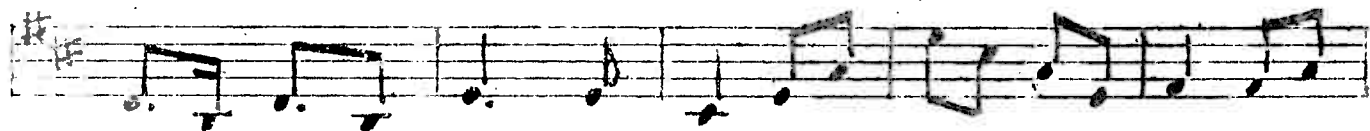
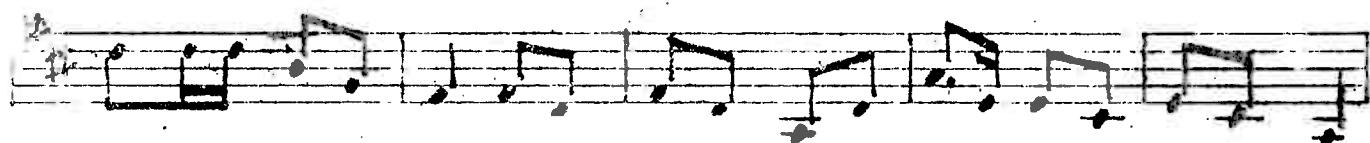
Handwritten musical notation on a single staff. The melody continues with a quarter note D4, an eighth note C4, a quarter note B3, and a quarter note A3. A handwritten '1.' is above the first measure. The melody continues with a quarter note G3, an eighth note F#3, a quarter note E3, and a quarter note D3. A handwritten '2.' is above the second measure. The melody continues with a quarter note C3, an eighth note B2, a quarter note A2, and a quarter note G2. Chords 'D' and 'D' are written below the staff.

Handwritten musical notation on a single staff. The melody continues with a quarter note F#2, an eighth note E2, a quarter note D2, and a quarter note C2. A handwritten 'D' is below the first measure. The melody continues with a quarter note B1, an eighth note A1, a quarter note G1, and a quarter note F#1. A handwritten 'G Em A7' is below the second measure.

Handwritten musical notation on a single staff. The melody continues with a quarter note E2, an eighth note D2, a quarter note C2, and a quarter note B1. A handwritten 'A' is above the first measure. The melody continues with a quarter note A1, an eighth note G1, a quarter note F#1, and a quarter note E1. A handwritten 'D' is below the first measure. The melody continues with a quarter note D2, an eighth note C2, a quarter note B1, and a quarter note A1. A handwritten 'G Em' is below the last measure.

Handwritten musical notation on a single staff. The melody continues with a quarter note G2, an eighth note F#2, a quarter note E2, and a quarter note D2. A handwritten 'A' is above the first measure. The melody continues with a quarter note C2, an eighth note B1, a quarter note A1, and a quarter note G1. A handwritten 'A' is above the second measure. The melody continues with a quarter note F#1, an eighth note E1, a quarter note D1, and a quarter note C1. A handwritten 'A7' is below the first measure. The melody continues with a quarter note B0, an eighth note A0, a quarter note G0, and a quarter note F#0. A handwritten 'D' is below the second measure. The piece ends with a double bar line. The text 'D. S. al Fine' is written above the staff, and 'D. S. al Fine' is written below the staff. A handwritten note 'D. S. al Fine 30/1-83.' is written below the staff.

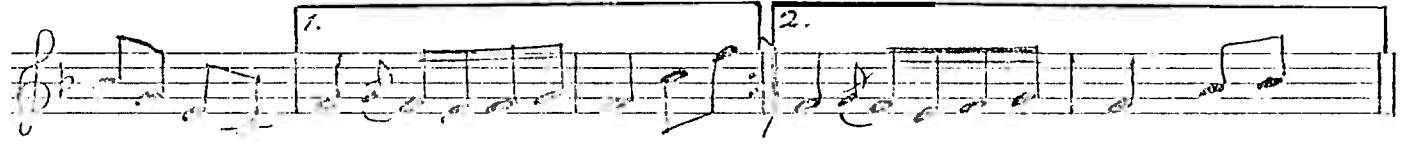
Stemme II. Ganglåt etter Blain-Otte



Fine
Joh. Johansen
1/2 - 83

1. stemme

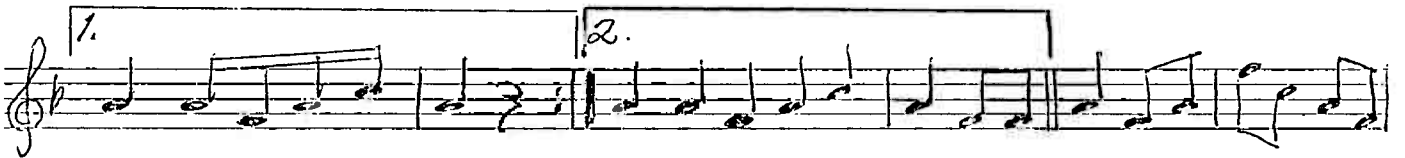
GANGLÅT etter Blänn-Olle



DS al ⊕ FINE
= FINE

Sanglåt etter Blånn-Olle

2. stemme



D.S. al \oplus
FINE

GANGHÄT eller Blånn-Ölle

2. Stemme

A. Klar.

4

1

2.

1.

2.

1.

2.

FINE

DS. al. e. FINE